



Global Property
and Asset
Management Software





THE COMPANY

Since 1984, Yardi Systems, Inc. has been the industry leader in the design, development, and support of software solutions for the real estate industry. It is now the market-leading specialist software solutions provider to the Property and Asset Management sector. With 10 offices throughout North America, Canada and Europe, Yardi has in excess of 18,000 customers.

Yardi's mission is to provide its customers with superior products and outstanding customer service. Yardi has a comprehensive product suite which caters for various market sectors including commercial and residential property management, pension fund management, property development companies, and local and central government.

Yardi's Voyager International™ solution is an intuitive, browser-based and integrated, property management and accounting system which enables clients to seamlessly manage complex fund structures, portfolio accounting and asset management performance as well as day to day operational management tasks including: rent invoicing, accounts receivable/payable, general ledger, budgeting and forecasting and maintenance – all in real-time and across multiple locations. Yardi enjoys a customer base that incorporates some of the world's leading international companies. Its European customers include: Deloitte, Sachsenfonds, Cushman & Wakefield Healey & Baker™, ProLogis, CBRE Investors, Heitman, Invesco, Meinl European Land and Mount Street Holdings. Yardi Systems' corporate headquarters is in Santa Barbara and employs over 400 employees throughout the United States and Europe.

THE PRODUCTS

Yardi Voyager International™ property and asset management software is a real-time, browser-based program that provides integrated and intuitive management and accounting functions. With over 20 years in the industry, Yardi has designed Voyager International with the client in mind. It is especially suited for property managers, third party managers, asset managers, fund managers, principal investors and owners with commercial and residential properties that span the global market place.

GLOBAL RECOGNITION

Yardi Voyager International is currently used in over 14 countries across Europe and 11 countries in Asia and is able to offer a truly global solution from a single data source. Yardi Voyager is currently used throughout North America and Canada by some 500 organisations and Yardi Voyager International™ is packed with essential tools that enable international companies to manage their day-to-day operations efficiently and in real-time. Its highly customisable functions mean that users can create reports in their local language, managing Generally Accepted Accounting Principles (GAAP), value-added tax (VAT) regulations, indexation, currency and language restrictions across multiple countries, simply and quickly. All in all its advanced reporting capabilities mean Voyager International can be adapted to the needs of any organisation.



Key Features

- Internet-based solution with customisable user interface
- Access information from a single centralised database
- Flexible deployment options – hosted or self host environments
- Unlimited user capacity incorporating high level data security
- Real-time processing
- Accounts payable (A/P) and accounts receivable (A/R) value-added tax (VAT) processing
- Portfolio accounting and performance
- Multi-currency conversion
- Customisable language translation tables
- Local language invoices/reporting
- Indexation, break clause options, rent review, turnover rent, penalty interest
- Invoicing per country (includes credit notes and document sequencing)
- Square metre to square feet conversion
- Service charge requirements
- Corporate occupier functionality
- Powerful reporting capabilities
- Global implementation

Global Property and Asset Management Software

YARDI VOYAGER INTERNATIONAL™

Yardi Voyager International™ property and asset management software is an intuitive, browser-based program that provides integrated, comprehensive management and accounting functions. The centralised database offers the ability to handle transactions and run up-to-the-minute reports at any time, anywhere around the globe, as long as you have a browser and Internet connection. The program's customisable workflow and advanced reporting capabilities can be adapted to the needs of any organisation.

FULLY INTEGRATED

Users can manage every aspect of commercial and residential management including office, retail and industrial property portfolios. Fully integrated, Voyager International tracks maintenance and construction projects, budgets and forecasting, lease charges, day to day property and portfolio management in one integral system.

COMPLETE ACCOUNTING SYSTEM

A core component of Voyager International is the integrated General Ledger that provides an extremely flexible account structure, real-time accounting, recurring and auto reversing journal entries, drill down capability, simultaneous cash and accrual accounting, and much more.

CENTRALISED DATABASE

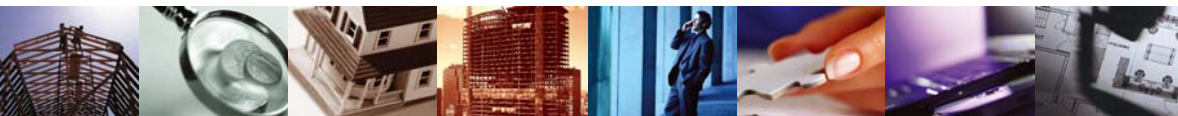
Yardi Voyager International software significantly reduces the time of labour-intensive tasks associated with conducting business globally. The easy-to-use browser interface can be customised to create user profile views and quick menus that will answer your organisation's business needs. Global access to a centralised database in either a hosted or self-hosted environment provides unlimited user capacity, faster processing time, and the ability to run real-time reports and generate transactions enterprise-wide from any Internet connection. Voyager International makes multi-currency property management easy.

YARDI MAINTENANCE - INTEGRAL MODULE

Yardi Maintenance helps track daily maintenance activity across multiple units/properties. It saves time and resources by organising information logically and efficiently.

KEY FEATURES:

- Access information from multiple locations
- Provide access to contractors/customers
- Define security levels and budget holders
- View work order history per unit and asset
- Track status of all jobs through to completion
- Control costs by setting budget ceilings
- Stock inventory and set automatic recorder levels
- Recharge to different departments or tenants



Yardi Voyager

Property | VAT Info

Property: 01

Name: Redvers House

Address 1: Fairmile

Address 2:

County: Oxon

City: Henley on Thames

Post Code: RG9

Country: UK

Status: Active

PropType: Apartment

Region: West

Invest Type: Southwest Investment

SubType: Office Showroom

SubReg: Southwest

Manager: Susan Williams

Fund: FCP A

Holding Co: Holding Co 1

Finance Co: Finance Co 1

Nr of floors:

Notes:

Yardi Voyager - Microsoft Internet Explorer

Address: http://108.111.32.160/901International/tenantmenu.asp

Yardi Voyager

Home | Login | Logout | Quick menu

Lease Expiry

Tenant ID: [Get Fe] [Print]

Name: [Get Fe] [Print]

Address 1: [Get Fe] [Print]

Address 2: [Get Fe] [Print]

County: [Get Fe] [Print]

City: [Get Fe] [Print]

Post Code: [Get Fe] [Print]

Country: [Get Fe] [Print]

Email ID: [Get Fe] [Print]

Office: [Get Fe] [Print]

Home: [Get Fe] [Print]

FAK2: [Get Fe] [Print]

Lease Expiry

Tenant: [Get Fe] [Print]

Contract End: [Get Fe] [Print]

Status: [Get Fe] [Print]

Date 5.40 Notice Served: [Get Fe] [Print]

Notices: [Get Fe] [Print]

Rent Review Surveyor: [Get Fe] [Print]

Latest Date for 5.25: [Get Fe] [Print]

Notice Status: [Get Fe] [Print]

Date Served: [Get Fe] [Print]

Notice Type: [Get Fe] [Print]

Lease Expiry: [Get Fe] [Print]

In Tenant Fully Protected: [Get Fe] [Print]

Lease Sign: [Get Fe] [Print]

Inferior Rent Application: [Get Fe] [Print]

Building Surveyor instructed: [Get Fe] [Print]

Default Method of Payment: [Get Fe] [Print]

Base Currency: [Get Fe] [Print]

Val Reg#: [Get Fe] [Print]

Functions

- East view
- Lease Expiry
- Break Options
- Data
- Lease Charges
- Worksheet
- Measurement
- Menu (L)
- View Attachment
- Units
- Demographic
- T/J Commission
- Options
- Contacts
- Access
- Utilities
- Inventory
- Account and SSI
- Lease Break
- ACE
- Translations
- Reports
- Leaser



"A high-performing instrument to control assets around the world"

**Florian Geistmann, Funds Manager,
SachsenFonds GmbH**

OPTIONAL MODULE:

BUDGETING AND FORECASTING

Yardi Budgeting and Forecasting is an optional add-on feature of the Yardi suite of property management software. It allows managers to project the effects of leasing decisions across a portfolio of properties. Its advanced features significantly enhance the budget preparation process and financial reporting capabilities found in Voyager International, by automating budget creation based on historical information. Investment/Asset managers analysing the value of new lettings and corporate managers analysing cash flow implications both benefit from this time saving tool that delivers detailed projections in a fraction of the time.

KEY FEATURES:

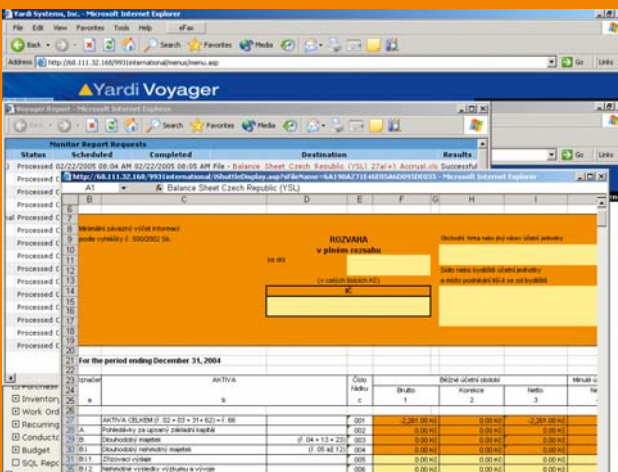
- Complete integration with Yardi Voyager International Property Management System
- Allows access from multiple office/units/site
- Provides automated projections of revenues from defined leases
- Reviews projected indexed rental increases, rent reviews and service charge estimates

THE BENEFITS

Yardi's Budgeting and Forecasting software is designed for detailed analysis and comparison of future income and expenses. Its advanced features significantly enhance the budget preparation process and financial reporting capabilities already built into Yardi's product line. Users can easily create many different types of budget worksheets, all based on details from actual tenant leases and property units. A comprehensive narrative system explains relative differences, making budget reviews more effective and accurate. The powerful Budgeting and Forecasting tools enable users to generate detailed budget projections with greater efficiency.

"The ability to customise the system to different accounting standards is great"

**Uwe de Vries, Head of Finance,
SachsenFonds GmbH**



Security

- Built-in and user definable security parameters to ensure integrity of data
- Multiple levels of user privileges and access permissions available
- Network and application security achieved through secure sockets layer to ensure network privacy through data encryption and client/server authentication techniques
- Sophisticated back-up technology employed through data centres to safeguard data

Budget preparation is simple in any language

OPTIONAL MODULE:

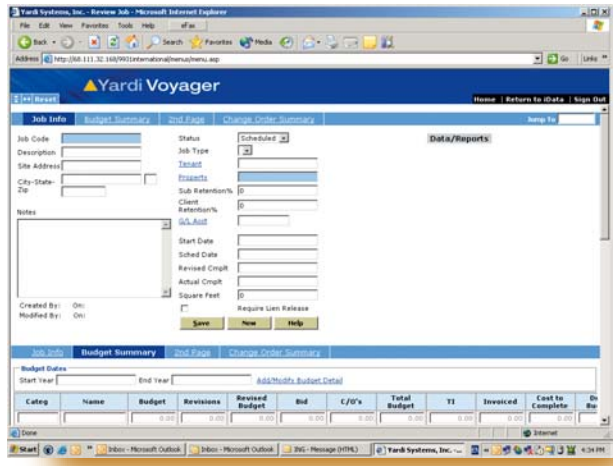
YARDI CONSTRUCTION

Yardi Construction Management is a job costing and project tracking system that allows managers to track diverse projects from refurbishment or shop fitting to new commercial developments. Designed to assist developers who build from the ground up, as well as corporate occupiers and commercial managers, the system tracks accounts payable, accounts receivable, job budgets and more.

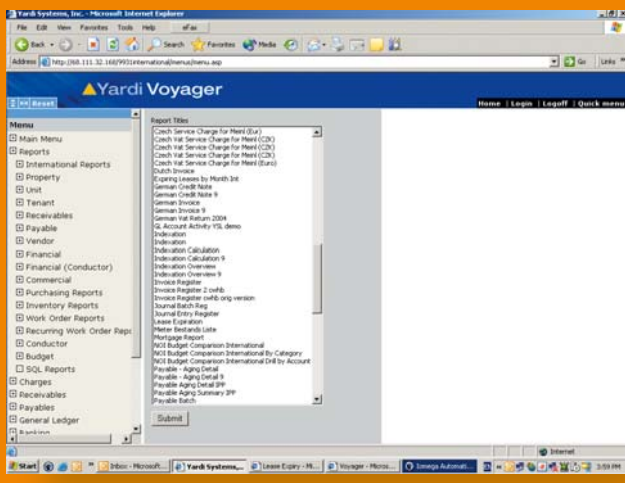
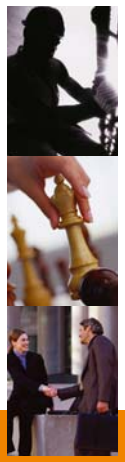
KEY FEATURES:

- Access to information from multiple locations (outlets/properties/sites)
- Access to contractors/customers
- User definable security levels
- Detailed recording capabilities
- Payable approvals and cheque processing
- Automatic over budget checking and alerts
- Flexible reporting options including output to Excel
- Create and manage multiple projects

“The system has added significantly to our value proposition and its potential has helped us to win new management contracts”
Simon Elmer, Head of Asset Management,
Cushman & Wakefield Healey & Baker™



Job costing and project tracking is straight forward



Reports are easy to customise

Customisation

The customisation options built into Yardi Voyager International are designed to meet the diverse needs of the client. This allows Yardi to offer a product specifically tailored for each individual client. Screens, menus, reports and options can all be customised sufficiently to accurately reflect the changes in GAAP, VAT regulations, as well as currency and language restrictions across countries.

Yardi offers both on-site and remote implementation support, “train the trainer” and end-user training. There is also a European Help Desk to further assist organisations in their implementation and use of Yardi Voyager International.



Yardi offices

Yardi UK

Henley on Thames:

Victoria House
35 Queen Street
Henley on Thames RG9 1AR
Phone: +44 (0) 1491 575020
email: europe@yardi.com

Yardi Netherlands:

Hoogoorddreef 9,
Afrika Gebouw,
1101 BA
Amsterdam
Phone:+31 (0) 20 3120-494
email: europe@yardi.com

Yardi UK

London:

Liberty House,
222, Regent Street,
London W1B 5TR
Phone:+44 (0) 20 7297 2491
email: europe@yardi.com

Yardi USA:

430 South Fairview Avenue
Goleta, CA 93117
Phone:+1 805 966 3373
email: sales@yardi.com

For more information please visit our website www.yardi.com

